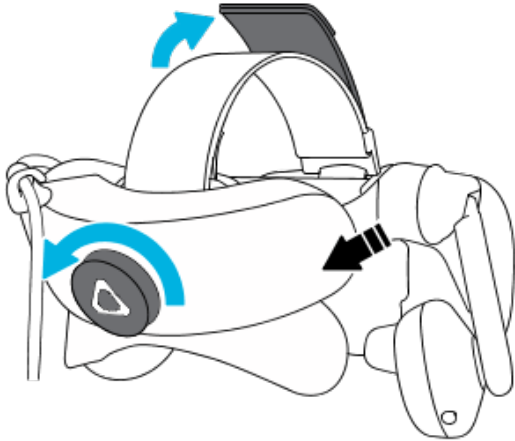


PUTTING ON THE VIVE PRO HEADSET

Video Demo: <https://youtu.be/EBUXPv76E3Q>

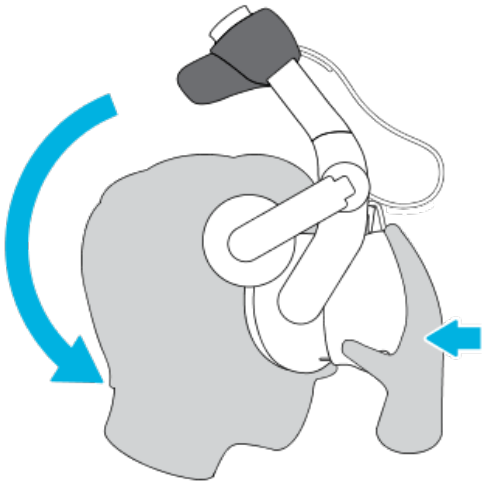
Step 1

Loosen the strap by rotating the adjustment dial counter-clockwise, and then detach the velcro fastener on the top band.



Step 2

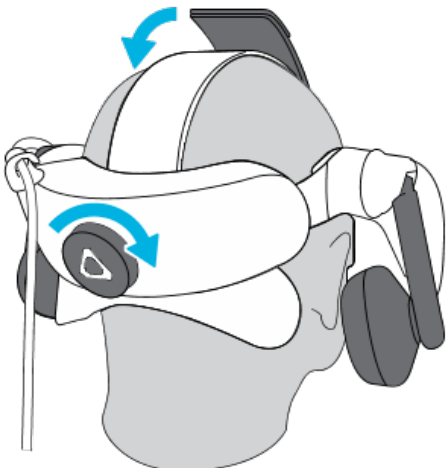
Press the headset towards your eyes, and then slide the strap around the back of your head.



The headset can be worn with glasses, but make sure to place headset over your glasses first before sliding strap back.

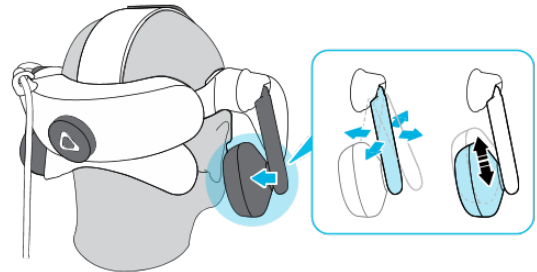
Step 3

Rotate the adjustment dial clockwise until the headset **fits snugly**, and then reattach the velcro fastener on the top band.



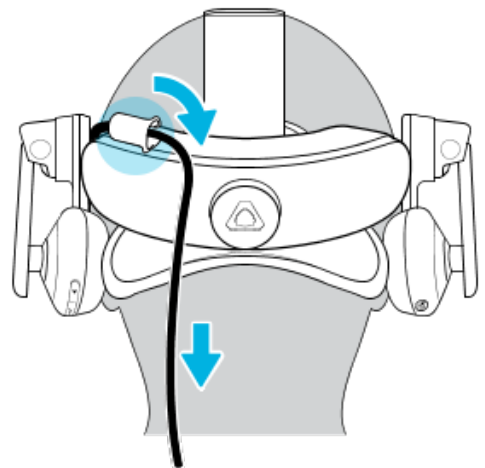
Step 4

Adjust the earphones to a comfortable position over your ear, and then press the earphones towards your ears until they're properly in place.



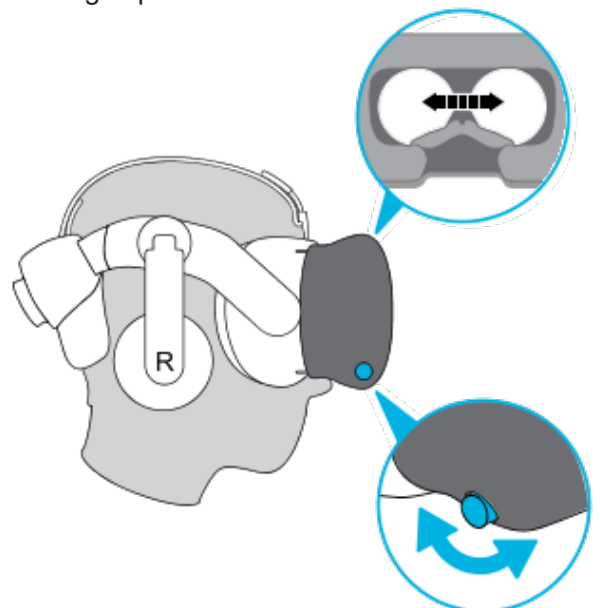
Step 5

Make sure that the headset cable passes through the cable clip at the back of the headset, and is positioned straight down your back.



Step 6

Interpupillary distance (IPD) is the distance between the center of the pupils in your eyes. Once the headset is on, if the picture seems blurry or your eyes are unable to focus you may need to adjust the IPD to ensure the best viewing experience.



To change the distance between the lenses, rotate the IPD knob until picture is clear and crisp.